



## Beamish Rise

Stanley DH9 0UH

£985 Per Calendar Month







This footer paragraph is an example only and should not be relied upon as complying with current legislation. These particulars, whilst believed to be accurate are set out as a general outline only for guidance and do not constitute any part of an offer or contract. Intending purchasers should not rely on them as statements of representation of fact, but must satisfy themselves by inspection or otherwise as to their accuracy. No person in this firms employment has the authority to make or give any representation or warranty in respect of the property.

# Beamish Rise

Stanley DH9 0UH



Nestled in the charming area of Beamish Rise, Stanley, this deceptively spacious three-bedroom townhouse offers a delightful blend of modern living and picturesque countryside views. Spanning three storeys, this property is perfect for families or professionals seeking a comfortable and stylish home.

Upon entering, you are welcomed by a generous entrance hall that leads to a convenient ground floor WC. The heart of the home is the fitted kitchen, dining, and family room, which is equipped with built in appliances making it ideal for both everyday meals and entertaining guests. The first floor boasts a bright and airy lounge, featuring UPVC double glazed French doors that open onto a charming Juliet balcony, allowing you to soak in the stunning views.

The townhouse comprises three well-proportioned bedrooms, with the first floor bedroom benefitting from an en suite bathroom for added privacy. The second floor houses two further double bedrooms, one of which also includes an en suite, alongside a family bathroom, ensuring ample space for all.

Outside, the property features a garden to the rear, perfect for enjoying the fresh air, and parking for two

vehicles, providing convenience for residents and visitors alike. This unfurnished home is available immediately, making it an excellent opportunity for those looking to move in without delay.

Do not miss the chance to view this exceptional property. Call early to secure your appointment on 0191 3729898.

## ENTRANCE HALL

## GROUND FLOOR WC

## KITCHEN/DINING/FAMILY ROOM

## FIRST FLOOR

### LOUNGE

15'5" x 10' (4.70m x 3.05m)

### BEDROOM

11'6" x 8'9" (3.51m x 2.67m)

### EN SUITE

## SECOND FLOOR

### BEDROOM

11'10" x 8'5" (3.61m x 2.57m)

## EN SUITE

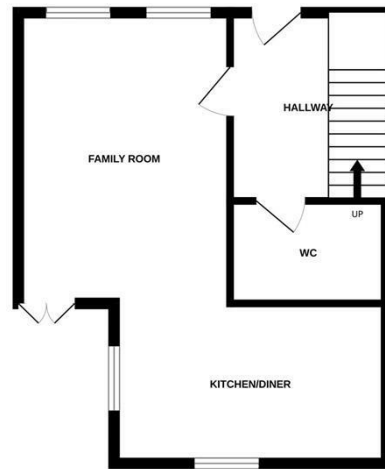
## BEDROOM

11'6" x 8'5" (3.51m x 2.57m)

## BATHROOM/WC

## OUTSIDE

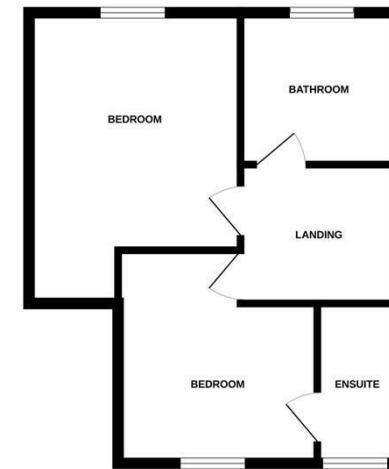
GROUND FLOOR



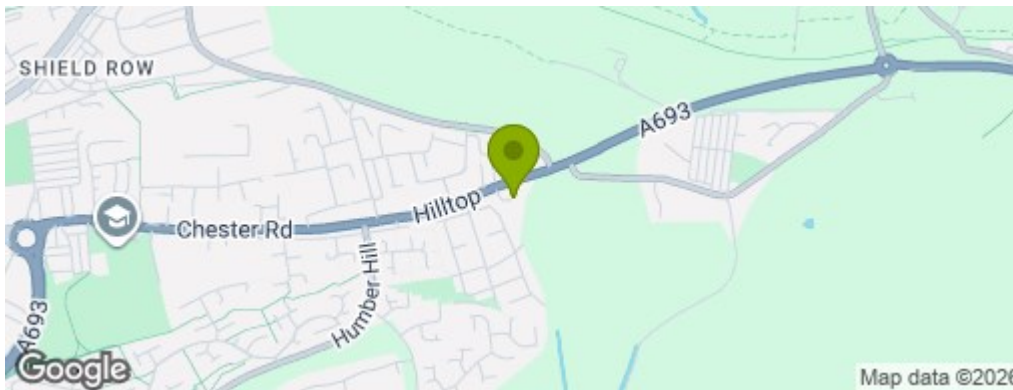
1ST FLOOR



2ND FLOOR



Whilst every attempt has been made to ensure the accuracy of the floorplan contained here, measurements of doors, windows, rooms and any other items are approximate and no responsibility is taken for any error, omission or mis-statement. This plan is for illustrative purposes only and should be used as such by any prospective purchaser. The services, systems and appliances shown have not been tested and no guarantee as to their operability or efficiency can be given.  
Made with Metropix ©2026



## Property Information

**0191 372 9898**

Suite 6, 15 North Burns, Chester-Le-Street, County Durham, DH3 3TF  
[sales.cls@venturepropertiesuk.com](mailto:sales.cls@venturepropertiesuk.com)